

Magni

Magni RTH5.21

€ 59.500excl.

Year **2014**
Reference number **BM006915**
Hours **3.965**

Algemeen

Type **RTH5.21**
Location **Veldhoven, Netherlands**
Certificaat **CE**

Description

Available at Boss Machinery! This Magni RTH5.21 Telescopic handlers from 2014 has an engine power of 95 kW and counts 3965 operational hours. The total weight of this Magni RTH5.21 is 16500 kg and the dimensions are 8.80 x 2.38 x 3.07. Furthermore, this RTH5.21 is equipped with Quick coupler, Air Conditioning, Radio, Air Suspension Seat, Extra hydraulic function. The Magni Telescopic handlers also has a CE marking. Do you want more information or do you want to try the Magni RTH5.21 at our yard? Please let us know.

Maten / Gewichten

Weight: **16500**
L*W*H: **8.80 x 2.38 x 3.07**

Technische informatie

Drive configurations **4x4 (4 Wheel Steering / Crab Mode)**

Motor informatie

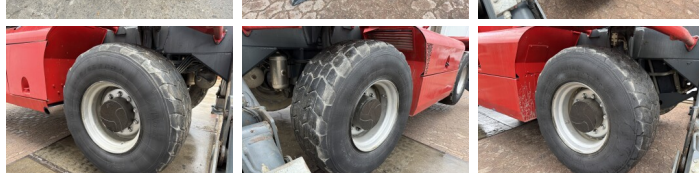
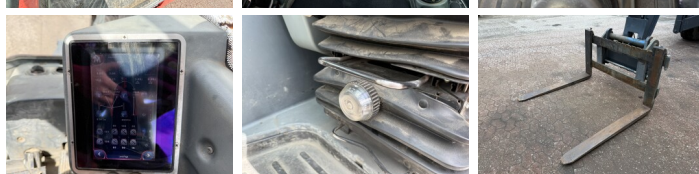
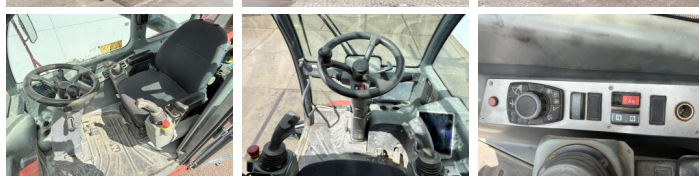
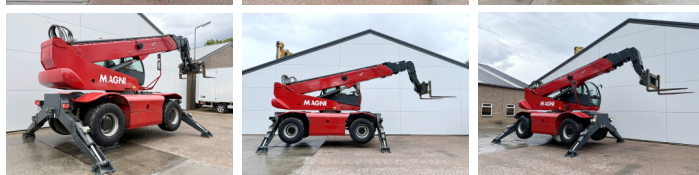
Engine brand: **Mercedes-Benz**
Engine model: **OM 924 LA**
Cylinders: **4**
Turbo
Capacity in kW: **95**

Banden / Rupsen

20% 20% **445/65R22.5**
20% 20% **445/65R22.5**

BOSS

MACHINERY



Opties

Quick coupler

Air Conditioning

Radio

Air Suspension Seat

Extra hydraulic function