

Volvo

Volvo EW160C

€ 32.500excl.

Year 2009
Reference number BC0172
Hours 15.745

Algemeen

Type EW160C
Location Veldhoven, Netherlands
Certificaat CE + EPA
Chassis number VCEW160CC00121130
Available at Boss Machinery! This Volvo EW160C Wheeled Excavator from 2009 has an engine power of 115 kW and counts 15745 operational hours. The total weight of this Volvo EW160C is 18250 kg and the dimensions are 8.10 x 2.60 x 3.40. Furthermore, this EW160C is equipped with Air Conditioning, Quick coupler, Extra hydraulic function, Hammer function. The Volvo Wheeled Excavator also has a CE + EPA marking. Do you want more information or do you want to try the Volvo EW160C at our yard? Please let us know.

Maten / Gewichten

L*W*H: 8.10 x 2.60 x 3.40
Weight: 18250

Technische informatie

Drive configurations 4 x 4

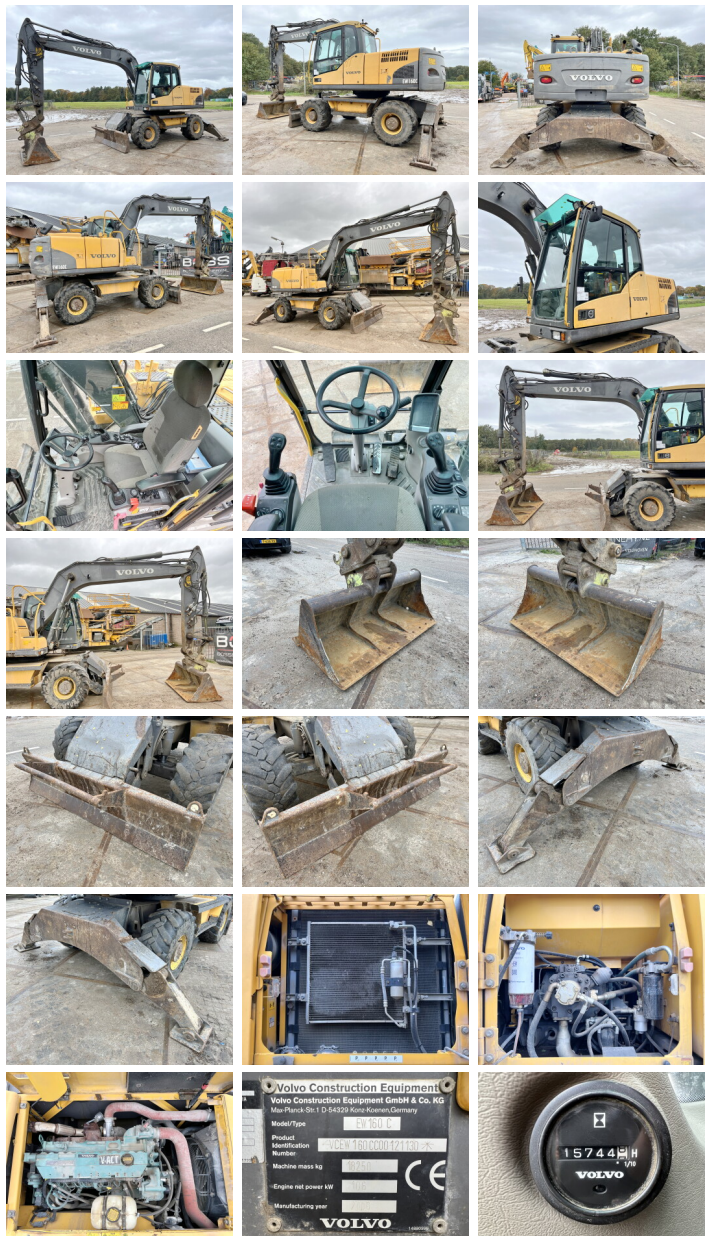
Motor informatie

Engine brand: Volvo
Engine model: D6E EDE3
Cylinders: 6
Turbo
Capacity in kW: 115

Opties

Air Conditioning

BOSS
MACHINERY



Quick coupler
Extra hydraulic function
Hammer function