

Case

Case CX300C

BOSS
MACHINERY

Year **2011**
Reference number **BM005741**
Hours **20.033**

Algemeen

Type **CX300C**
Location **Veldhoven, Netherlands**
Dutch vehicle
Certificaat **CE + EPA**
Chassis nummer **DCH300R6NBEAM1115**

Description

Available at Boss Machinery! This Case CX300C Material handler from 2011 has an engine power of 154 kW and counts 20033 operational hours. Always worked in The Netherlands. The total weight of this Case CX300C is 31000 kg and the dimensions are 10.65 x 3.18 x 3.35. Furthermore, this CX300C is equipped with Quick coupler, Radio, Air Conditioning, Extra hydraulic function, Hammer function. The Case Material handler also has a CE + EPA marking. Do you want more information or do you want to try the Case CX300C at our yard? Please let us know.

Maten / Gewichten

Weight: **31000**
L*W*H: **10.65 x 3.18 x 3.35**

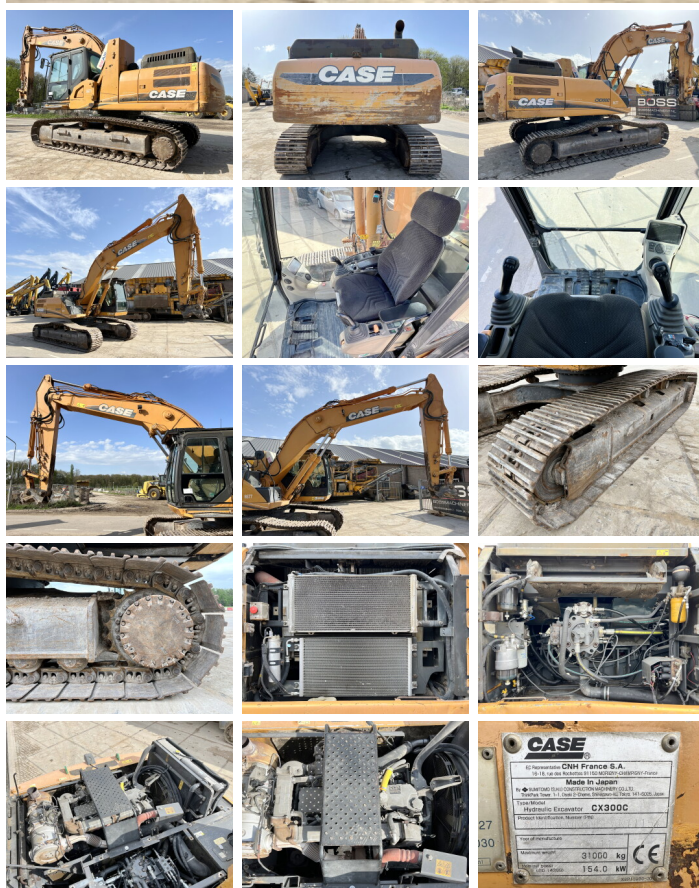
Motor informatie

Engine brand: **Isuzu**
Engine model: **AL-6HK1X**
Cylinders: **6**
Capacity in kW: **154**

Banden / Rupsen

Opties

Quick coupler
Radio
Air Conditioning
Extra hydraulic function



Hammer function