

Caterpillar

# Caterpillar 120H



Year **2001**  
Reference number **BM007902**  
Hours **19.125**

## Algemeen

Type 120H - CE certified  
Location Veldhoven, Netherlands  
Certificaat CE

Available at Boss Machinery! This Caterpillar 120H - CE certified Grader from 2001 has an engine power of 104 kW and counts 19125 operational hours. The total weight of this Caterpillar 120H - CE certified is 14000 kg and the dimensions are 9.08 x 2.75 x 3.39. Furthermore, this 120H - CE certified is equipped with Radio, Extra hydraulic function. The Caterpillar Grader also has a CE marking. Do you want more information or do you want to try the Caterpillar 120H - CE certified at our yard? Please let us know.

Description

## Maten / Gewichten

L\*W\*H: 9.08 x 2.75 x 3.39  
Weight: 14000

## Technische informatie

Drive configurations 6x4

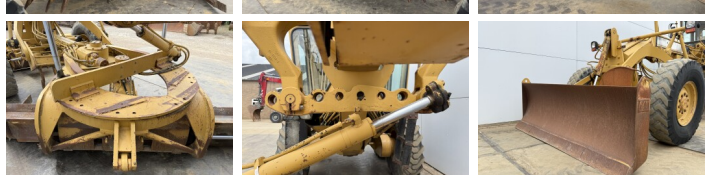
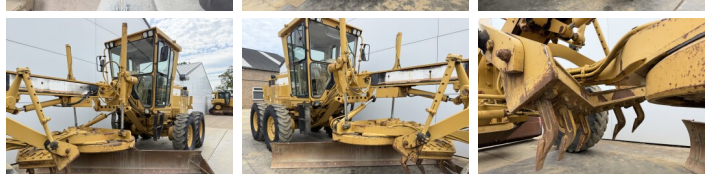
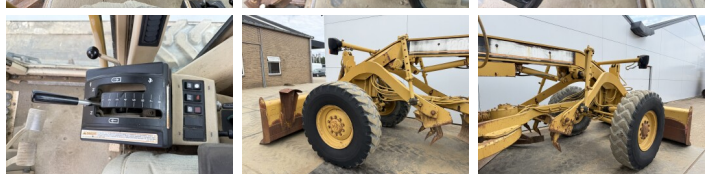
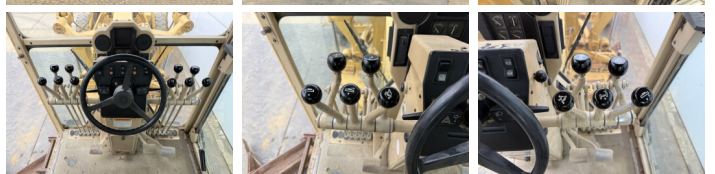
## Motor informatie

Engine brand: Caterpillar  
Engine model: 3116  
Cylinders: 6  
Turbo  
Capacity in kW: 104

## Banden / Rupsen

10% 10% 14.00-24  
30% 30% 14.00-24  
30% 30% 14.00-24

## Opties



Radio

Extra hydraulic function