

Atlas

Atlas Copco Boomer XE3C C30

€ 125.000excl.

Year **2014**
Reference number **BM007075**
Hours **3.105**

Algemeen

Type **Boomer XE3C C30**
Location **Veldhoven, Netherlands**
Certificaat **CE**

Description

Available at Boss Machinery! This Atlas Boomer XE3C C30 Drill from 2014 has an engine power of 180 Diesel + 285 Electric kW and counts 3105 operational hours. The total weight of this Atlas Boomer XE3C C30 is 53000 kg and the dimensions are 16.65 x 2.75 x 3.66. Furthermore, this Boomer XE3C C30 is equipped with . The Atlas Drill also has a CE marking. Do you want more information or do you want to try the Atlas Boomer XE3C C30 at our yard? Please let us know.

Maten / Gewichten

Weight: **53000**
L*W*H: **16.65 x 2.75 x 3.66**

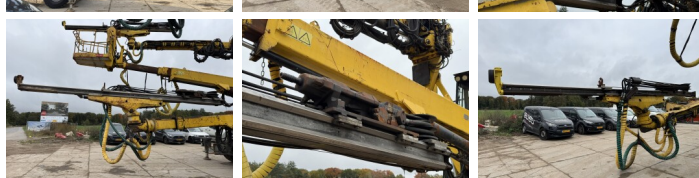
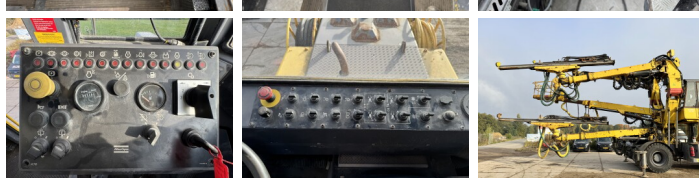
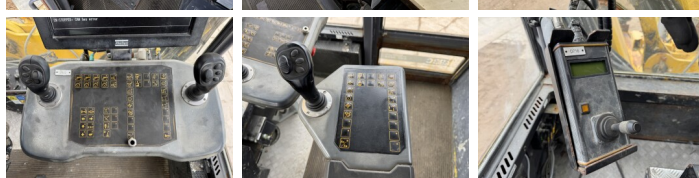
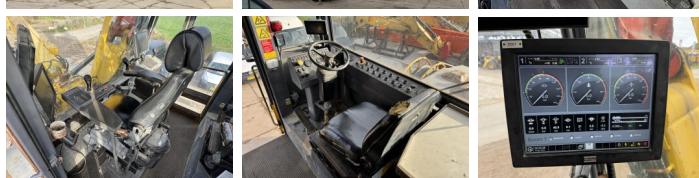
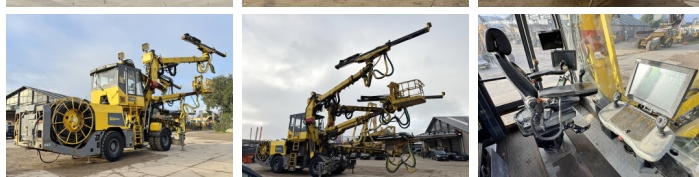
Technische informatie

Hertz **50**
Voltage **1000**
Ampere **288**
KVA **27**
Drive configurations **4x4**

Motor informatie

Engine brand: **Deutz**
Engine model: **TCD 2013 L06 2V**
Cylinders: **6**
Turbo
Capacity in kW: **180 Diesel + 285 Electric**

BOSS
MACHINERY



Banden / Rupsen

70% 70% 70% 70% 14.00R24 Michelin
70% 70% 14.00R24 Michelin