

Hitachi

Hitachi KH150 GLS-2 - 30.3m Drill

€ 125.000excl.

Year **1977**
Reference number **BM006411**
Hours **5.453**

Algemeen

Type **KH150 GLS-2 - 30.3m Drill**
Location **Veldhoven, Netherlands**
Dutch vehicle
Certificaat **CE**

Description

Available at Boss Machinery! This Hitachi KH150 GLS-2 - 30.3m Drill from 1977 has an engine power of - kW and counts 5453 operational hours. Always worked in The Netherlands. The total weight of this Hitachi KH150 GLS-2 - 30.3m Drill is - kg and the dimensions are 9.50 x 3.42 x 3.47. Furthermore, this KH150 GLS-2 - 30.3m Drill is equipped with Central greasing. The Hitachi Drill also has a CE marking. Do you want more information or do you want to try the Hitachi KH150 GLS-2 - 30.3m Drill at our yard? Please let us know.

Maten / Gewichten

L*W*H: 9.50 x 3.42 x 3.47

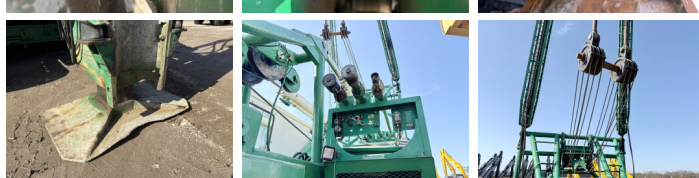
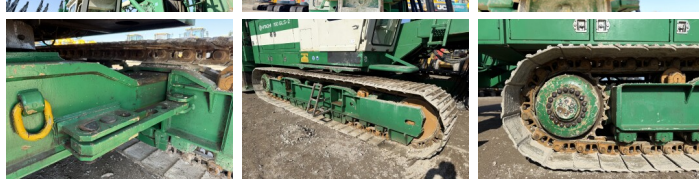
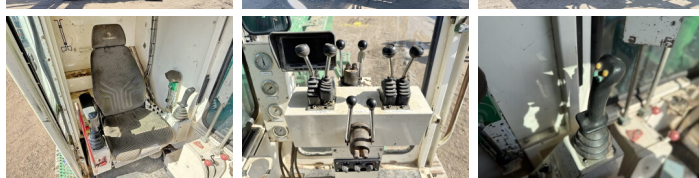
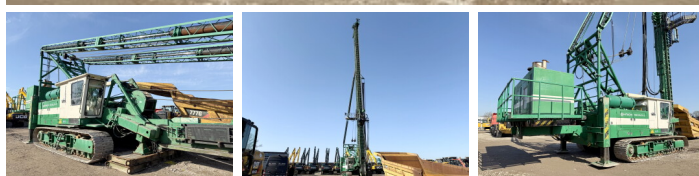
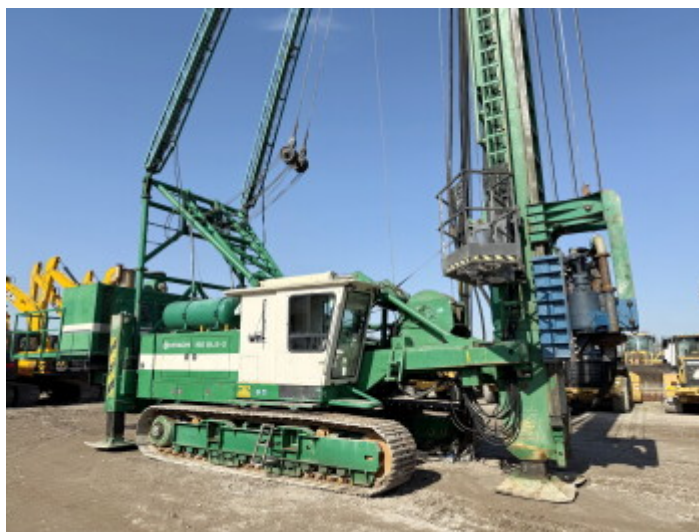
Motor informatie

Engine brand: **Cummins NTA 855 (Powerpack)**
Engine model: **DAF 1160 (Machine)**
Turbo

Banden / Rupsen

Plate % **30**
Sprocket % **80**
Chain % **80**
Plate width: **77 cm**

BOSS
MACHINERY



Opties

Central greasing