

Epiroc

Epiroc ME5 Shotcrete



Year **2018**
Reference number **BM007077**
Hours **3.105**

Algemeen

Type ME5 Shotcrete
Location Veldhoven, Netherlands
Certificaat CE

Available at Boss Machinery! This Epiroc ME5 Shotcrete Concrete pump from 2018 has an engine power of Diesel: 74kw - Electric: 130kw kW and counts 3105 operational hours. The total weight of this Epiroc ME5 Shotcrete is 19255 kg and the dimensions are 11.65 x 2.27 x 3.32 . Furthermore, this ME5 Shotcrete is equipped with Central greasing. The Epiroc Concrete pump also has a CE marking. Do you want more information or do you want to try the Epiroc ME5 Shotcrete at our yard? Please let us know.

Description

Maten / Gewichten

Weight: 19255
L*W*H: 11.65 x 2.27 x 3.32

Technische informatie

Drive configurations 4x4x4 (4 Wheel Steering)

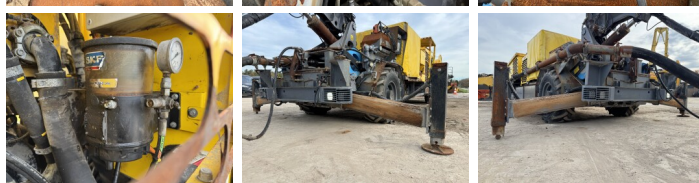
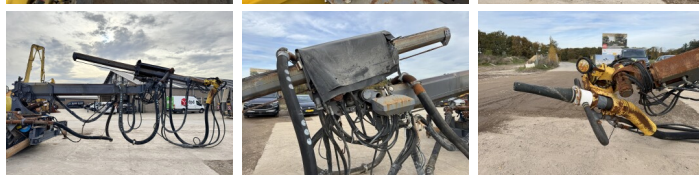
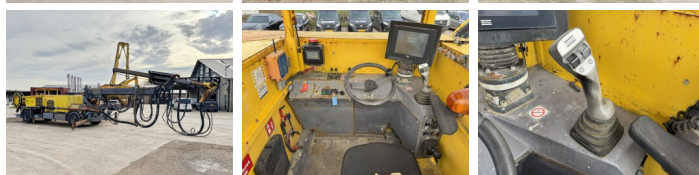
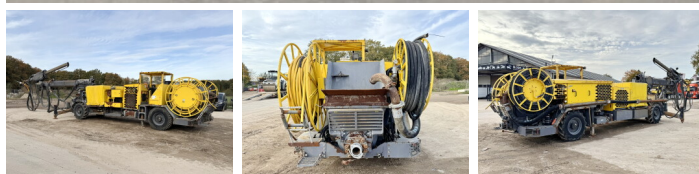
Motor informatie

Engine brand: Deutz
Engine model: TCD 3.6
Cylinders: 4
Turbo
Capacity in kW: Diesel: 74kw - Electric: 130kw

Banden / Rupsen

70% 70% 405/70-20
70% 70% 405/70-20

Opties



Central greasing