

Hyster

Hyster RS46-29XD

BOSS
MACHINERY

Year 2023
Reference number BM005692
Hours 468

Algemeen

Type RS46-29XD
Location Veldhoven, Netherlands
First owner
Dutch vehicle
Certificaat CE
Chassis nummer F222E02033X

Description
Available at Boss Machinery! This Hyster RS46-29XD Reachstacker from 2023 has an engine power of 240 kW and counts 468 operational hours. Always worked in The Netherlands. Bought from the first owner. The total weight of this Hyster RS46-29XD is 66740 kg and the dimensions are -. Furthermore, this RS46-29XD is equipped with Camera, Air Conditioning, Extra hydraulic function, Central greasing. The Hyster Reachstacker also has a CE marking. Do you want more information or do you want to try the Hyster RS46-29XD at our yard? Please let us know.

Maten / Gewichten

Weight: 66740

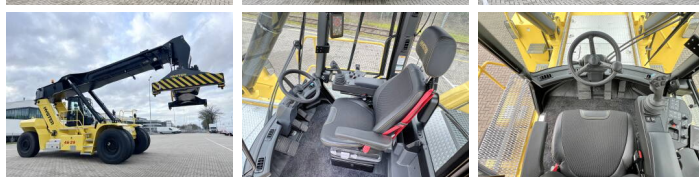
Motor informatie

Engine brand: Daimler Mercedes Benz
Engine model: OM470LA
Cylinders: 6
Turbo
Capacity in kW: 240

Banden / Rupsen

100%	100%	100%	100%	18.00-25 Continental Continterminal
100%	100%			18.00-25 Continental Continterminal

Opties



Camera

Air Conditioning

Extra hydraulic function

Central greasing