

Volvo

Volvo L90F

€ 49.500???????????

?????

2009

?????????? ?????

BM005655

?????

18.606

Algemeen

???

L90F

???????????????

Veldhoven, Netherlands

Dutch vehicle

Certificaat

CE + EPA

Chassis nummer

VCE0L90FV00026989

Available at Boss Machinery! This Volvo L90F Wheel Loader from 2009 has an engine power of 119 kW and counts 18606 operational hours. Always worked in The Netherlands. The total weight of this Volvo L90F is 17100 kg and the dimensions are 8.10 x 2.85 x 3.27.

?????????

Furthermore, this L90F is equipped with Heated Cab, Weighing system, ??????, ????? ?????????, Radio, ????????? ??????????. The Volvo Wheel Loader also has a CE + EPA marking. Do you want more information or do you want to try the Volvo L90F at our yard? Please let us know.

Maten / Gewichten

???????? ?*?* ?

8.10 x 2.85 x 3.27

?????

17100

Technische informatie

?????????????? ?? ?????????????? 4x4

Motor informatie

????? ?? ??????????

Volvo

Engine model

D6E

??????????

6

Turbo

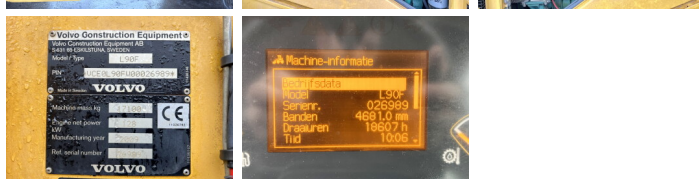
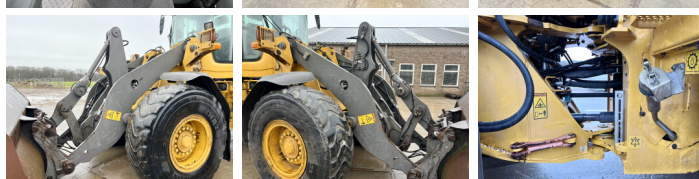
?????????? ? kW

119

Banden / Rupsen

BOSS

MACHINERY



50%	50%	20.5R25
50%	50%	20.5R25

Opties

Heated Cab

Weighing system

??????

????? ??????????

Radio

????????? ??????????