

Hyundai

Hyundai R340L Smart

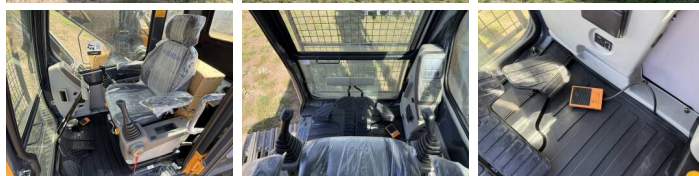


€ 113.950????????????

?????? 2026
?????????? ????? BM006847
?????? 5

Algemeen

??? R340L Smart
????????????????? Veldhoven, Netherlands
Certificaat NOT FOR SALE IN EU / NO CE MARK
Available at Boss Machinery! This used Hyundai R340L Smart Excavators from 2026 has an engine power of 206 kW and counts 5 operational hours. The total weight of this Hyundai R340L Smart is 33800 kg and the dimensions are 11.45 x 3.30 x 3.55. Furthermore, this R340L Smart is equipped with ??????, Dodatna hidrauli?ka funkcija, ?????? ???. The Hyundai Excavators also has a NOT FOR SALE IN EU / NO CE MARK marking. Do you want more information or do you want to try the Hyundai R340L Smart at our yard? Please let us know.



Maten / Gewichten

????? 33800
???????? ?*?* ? 11.45 x 3.30 x 3.55



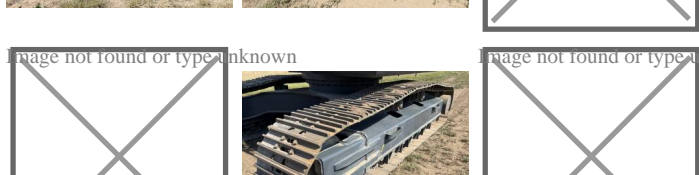
Technische informatie

Swing Speed: 9.5 rpm
Bucket Range cu.m: 1.44- 2.1
Maximum Digging Depth: 6820 mm



Motor informatie

????? ?? ?????????? Hyundai
Engine model D6AC-C1
???????????? 6
Turbo
???????????? ? kW 206



Banden / Rupsen



Image not found or type unknown

Image not found or type unknown

Image not found or type unknown

Image not found or type unknown

Image not found or type unknown

Image not found or type unknown

????%	100
???? ?????%	100
????%	100
???? ? ? ? ? ? ? ? ?	60 cm

Opties

?????

Dodatna hidrauli?ka funkcija

????? ? ?