

Hyundai

Hyundai R340L Smart



€ 113.950????????????

?????? 2026
?????????? ????? BM006847
?????? 5

Algemeen

??? R340L Smart
????????????????? Veldhoven, Netherlands
Certificaat NOT FOR SALE IN EU / NO CE MARK
Available at Boss Machinery! This used Hyundai R340L Smart Excavators from 2026 has an engine power of 206 kW and counts 5 operational hours. The total weight of this Hyundai R340L Smart is 33800 kg and the dimensions are 11.45 x 3.30 x 3.55. Furthermore, this R340L Smart is equipped with ???????, Dodatna hidrauli?ka funkcija, ??????? ???. The Hyundai Excavators also has a NOT FOR SALE IN EU / NO CE MARK marking. Do you want more information or do you want to try the Hyundai R340L Smart at our yard? Please let us know.

Maten / Gewichten

???????? ?*?* ? 11.45 x 3.30 x 3.55
?????? 33800

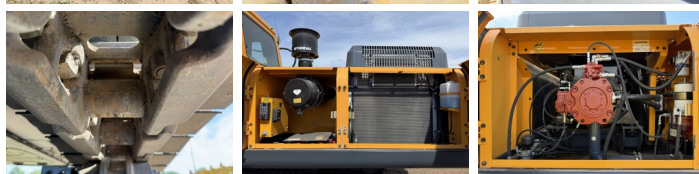
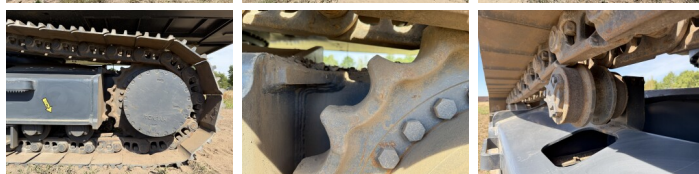
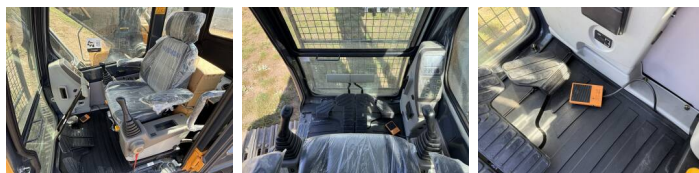
Technische informatie

Bucket Range cu.m: 1.44- 2.1
Maximum Digging Depth: 6820 mm
Swing Speed: 9.5 rpm

Motor informatie

????? ?? ?????????? Hyundai
Engine model D6AC-C1
???????????? 6
Turbo
???????????? ? kW 206

Banden / Rupsen



????%	100
???? ?????%	100
????%	100
???? ? ? ? ? ? ? ? ?	60 cm

Opties

?????

Dodatna hidrauli?ka funkcija

????? ? ? ?