

Magni

Magni RTH5.21

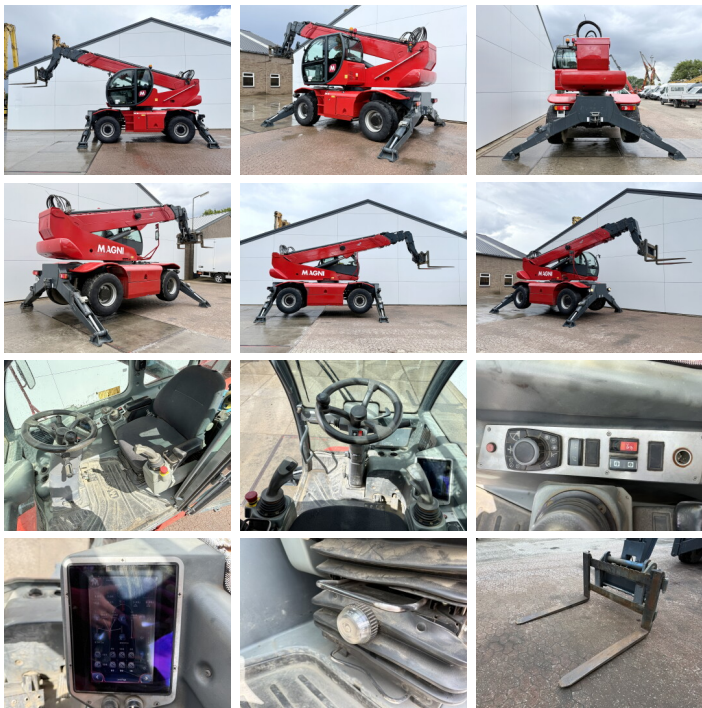


€ 59.500????????????

?????? 2014
?????????? ?????? BM006915
???????? 3.965

Algemeen

??? RTH5.21
????????????????? Veldhoven, Netherlands
Certificaat CE
Available at Boss Machinery! This Magni RTH5.21 Telescopic handlers from 2014 has an engine power of 95 kW and counts 3965 operational hours. The total weight of this Magni RTH5.21 is 16500 kg and the dimensions are 8.80 x 2.38 x 3.07. Furthermore, this RTH5.21 is equipped with ????????, Radio, Air Suspension Seat, ????? ????????????, Dodatna hidrauli?ka funkcija. The Magni Telescopic handlers also has a CE marking. Do you want more information or do you want to try the Magni RTH5.21 at our yard? Please let us know.



Maten / Gewichten

????? 16500
????????? ?*?* ? 8.80 x 2.38 x 3.07

Technische informatie

?????????????? ? ? ?????????????? 4x4 (4 Wheel Steering / Crab Mode)

Motor informatie

????? ? ? ??????????? Mercedes-Benz
Engine model OM 924 LA
???????????? 4
Turbo
???????????? ? kW 95

Banden / Rupsen

20% 20% 445/65R22.5
20% 20% 445/65R22.5



Opties

??????

Radio

Air Suspension Seat

???? ??????????

Dodatna hidrauli?ka funkcija