

Magni RTH5.26

€ 79.500??????????

2013

BM005722

4.213

Algemeen

RTH5.26

Veldhoven, Netherlands

CE

Available at Boss Machinery! This Magni RTH5.26 Telescopic handlers from 2013 has an engine power of 115 kW and counts 4213 operational hours. Always worked in The Netherlands. The total weight of this Magni RTH5.26 is 18000 kg and the dimensions are 9.35 x 2.85 x 3.16. Furthermore, this RTH5.26 is equipped with ?????????, Beacon, Radio, Backup alarm. The Magni Telescopic handlers also has a CE marking. Do you want more information or do you want to try the Magni RTH5.26 at our yard? Please let us know.

Maten / Gewichten

$$9.35 \times 2.85 \times 3.16$$

18000

Technische informatie

Automatic

25 660

4x4

Motor informatie

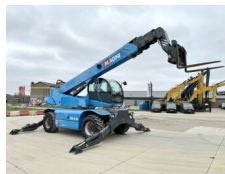
Mercedes

OM924LA

115

Banden / Rupsen

18-22.5



40% 40%

18-22.5

Opties

????? ???????????

Beacon

Radio

Backup alarm