

Caterpillar

Caterpillar 120H



??????	2001
?????????? ?????	BM007902
??????	19.125

Algemeen

??? 120H - CE certified
 ?????????????? Veldhoven, Netherlands
 Certificaat CE
 Available at Boss Machinery! This Caterpillar 120H - CE certified Grader from 2001 has an engine power of 104 kW and counts 19125 operational hours. The total weight of this Caterpillar 120H - CE certified is 14000 kg and the dimensions are 9.08 x 2.75 x 3.39. Furthermore, this 120H - CE certified is equipped with Radio, Dodatna hidrauli?ka funkcija. The Caterpillar Grader also has a CE marking. Do you want more information or do you want to try the Caterpillar 120H - CE certified at our yard? Please let us know.

Maten / Gewichten

?????? ?*?* ?	9.08 x 2.75 x 3.39
?????	14000

Technische informatie

????????????? ?? ?????????????? 6x4

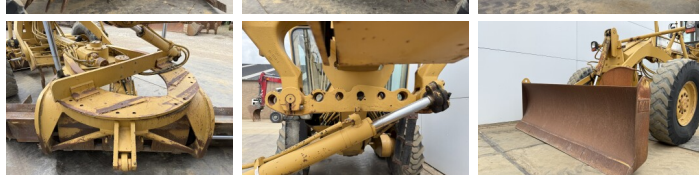
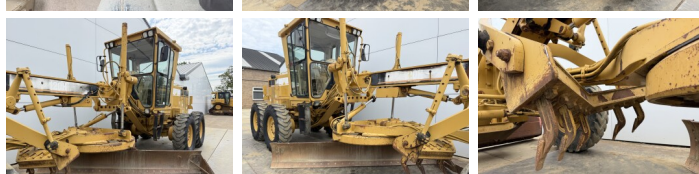
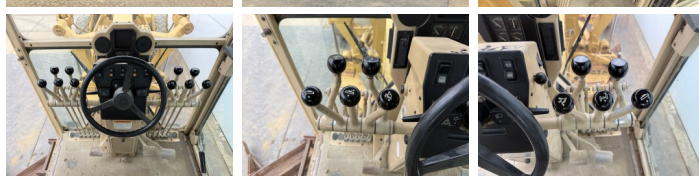
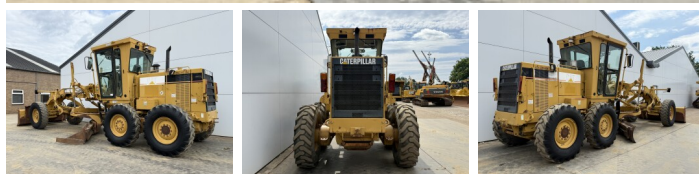
Motor informatie

????? ?? ??????????	Caterpillar
Engine model	3116
???????????	6
Turbo	
?????????? ? kW	104

Banden / Rupsen

10%	10%	14.00-24
30%	30%	14.00-24
30%	30%	14.00-24

Opties



Radio

Dodatna hidrauli?ka funkcija