

Hitachi

# Hitachi KH150 GLS-2 - 30.3m Drill

€ 125.000????????????

????? 1977  
?????????? ???? BM006411  
????? 5.453

## Algemeen

??? KH150 GLS-2 - 30.3m Drill  
???????????????? Veldhoven, Netherlands  
Dutch vehicle  
Certificaat CE

???????? Available at Boss Machinery! This Hitachi KH150 GLS-2 - 30.3m Drill from 1977 has an engine power of - kW and counts 5453 operational hours. Always worked in The Netherlands. The total weight of this Hitachi KH150 GLS-2 - 30.3m Drill is - kg and the dimensions are 9.50 x 3.42 x 3.47. Furthermore, this KH150 GLS-2 - 30.3m Drill is equipped with ?????????? ??????????. The Hitachi Drill also has a CE marking. Do you want more information or do you want to try the Hitachi KH150 GLS-2 - 30.3m Drill at our yard? Please let us know.

## Maten / Gewichten

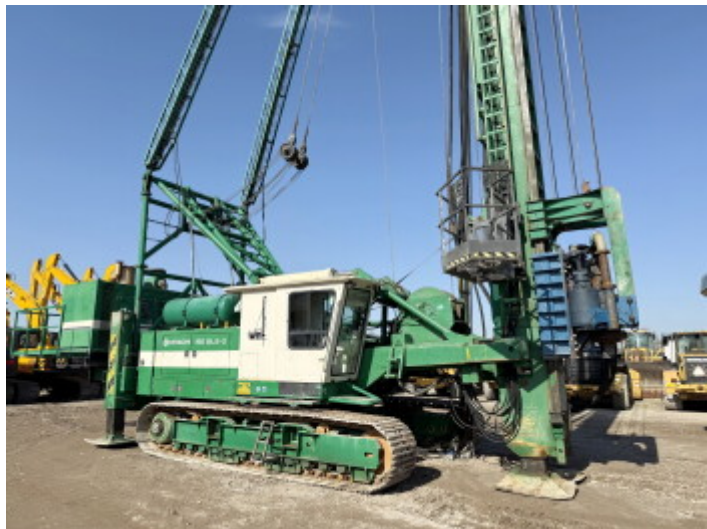
???????? ?\*?\* ? 9.50 x 3.42 x 3.47

## Motor informatie

????? ?? ?????????? Cummins NTA 855 (Powerpack)  
Engine model DAF 1160 (Machine)  
Turbo

## Banden / Rupsen

??????% 30  
????? ???????% 80  
??????% 80  
?????? ?? ??????? 77 cm



# Opties

---

???????? ?