

Epiroc

# Epiroc ME5 Shotcrete



??????  
???????????? ????  
??????

**2018**  
**BM007077**  
**3.105**

## Algemeen

???  
????????????????  
Certificaat

ME5 Shotcrete  
Veldhoven, Netherlands  
CE  
Available at Boss Machinery! This Epiroc ME5 Shotcrete Concrete pump from 2018 has an engine power of Diesel: 74kw - Electric: 130kw kW and counts 3105 operational hours. The total weight of this Epiroc ME5 Shotcrete is 19255 kg and the dimensions are 11.65 x 2.27 x 3.32 . Furthermore, this ME5 Shotcrete is equipped with ?????????? ??????????. The Epiroc Concrete pump also has a CE marking. Do you want more information or do you want to try the Epiroc ME5 Shotcrete at our yard? Please let us know.

?????????

## Maten / Gewichten

???????? ?\*?\* ?  
??????

11.65 x 2.27 x 3.32  
19255

## Technische informatie

?????????????? ?? ?????????????? 4x4x4 (4 Wheel Steering)

## Motor informatie

????? ?? ??????????  
Engine model  
????????????  
Turbo  
???????????? ? kW

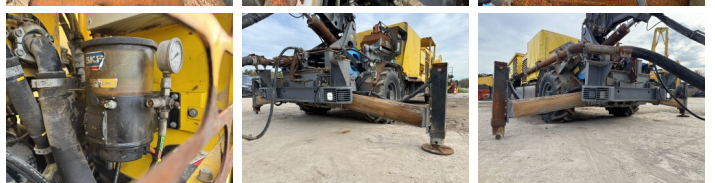
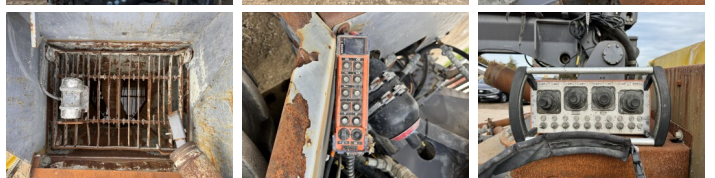
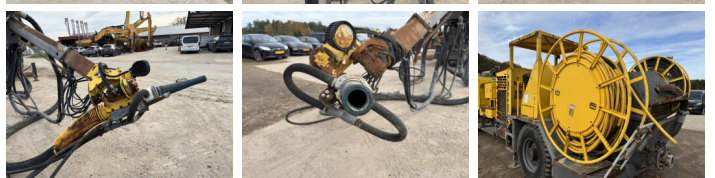
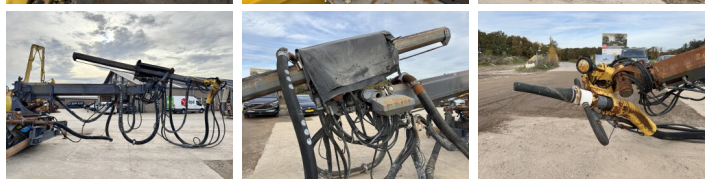
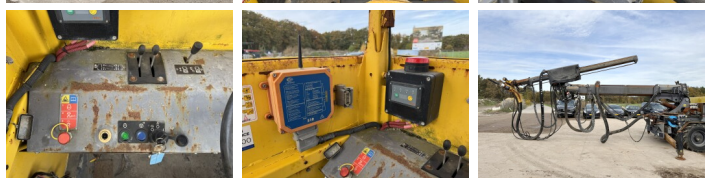
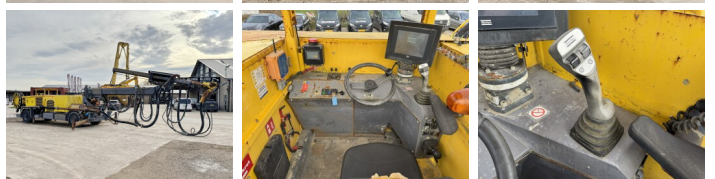
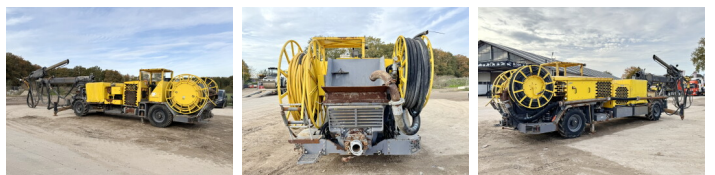
Deutz  
TCD 3.6  
4  
Diesel: 74kw - Electric:  
130kw

## Banden / Rupsen

70% 70%  
70% 70%

405/70-20  
405/70-20

## Opties



???????? ????????