

Magni

Magni RTH5.21

€ 59.500???

???

2014
BM006915
3.965

Algemeen

?????
?????
Certificaat

RTH5.21
Veldhoven, Netherlands
CE

Available at Boss Machinery! This Magni RTH5.21 Telescopic handlers from 2014 has an engine power of 95 kW and counts 3965 operational hours. The total weight of this Magni RTH5.21 is 16500 kg and the dimensions are 8.80 x 2.38 x 3.07. Furthermore, this RTH5.21 is equipped with ???????, ??????, Radio, Air Suspension Seat, ?????? ??????. The Magni Telescopic handlers also has a CE marking. Do you want more information or do you want to try the Magni RTH5.21 at our yard? Please let us know.

???

Maten / Gewichten

?????
???????? :?????
x????x????

16500
8.80 x 2.38 x 3.07

Technische informatie

?????

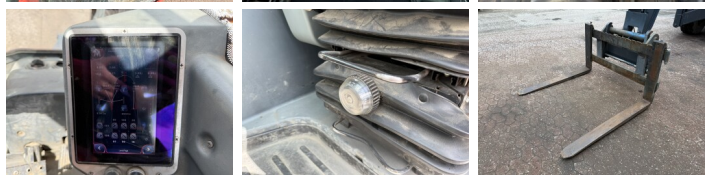
4x4 (4 Wheel Steering / Crab Mode)

Motor informatie

?????
???? \?????
????????\?????
?????
???? (???)
????? ???

Mercedes-Benz
OM 924 LA
4
95

Banden / Rupsen



20% 20%
20% 20%

445/65R22.5
445/65R22.5

Opties

?????? ??????

?????\?????

Radio

Air Suspension Seat

????? ?????????? ??????