

Magni

Magni RTH5.23

BOSS
MACHINERY

???
????
????

2015
BM005585
9.269

Algemeen

????
????
Dutch vehicle
First owner
Certificaat
Chassis nummer

RTH5.23
Veldhoven, Netherlands

CE
00000529
Available at Boss Machinery! This Magni RTH5.23 Telescopic handlers from 2015 has an engine power of 115 kW and counts 9269 operational hours. Always worked in The Netherlands. Bought from the first owner. The total weight of this Magni RTH5.23 is 18730 kg and the dimensions are 9.55 x 2.50 x 3.20. Furthermore, this RTH5.23 is equipped with . The Magni Telescopic handlers also has a CE marking. Do you want more information or do you want to try the Magni RTH5.23 at our yard? Please let us know.

???

Maten / Gewichten

????? :????
x????x?????
????

9.55 x 2.50 x 3.20
18730

Technische informatie

????

4 x 4

Motor informatie

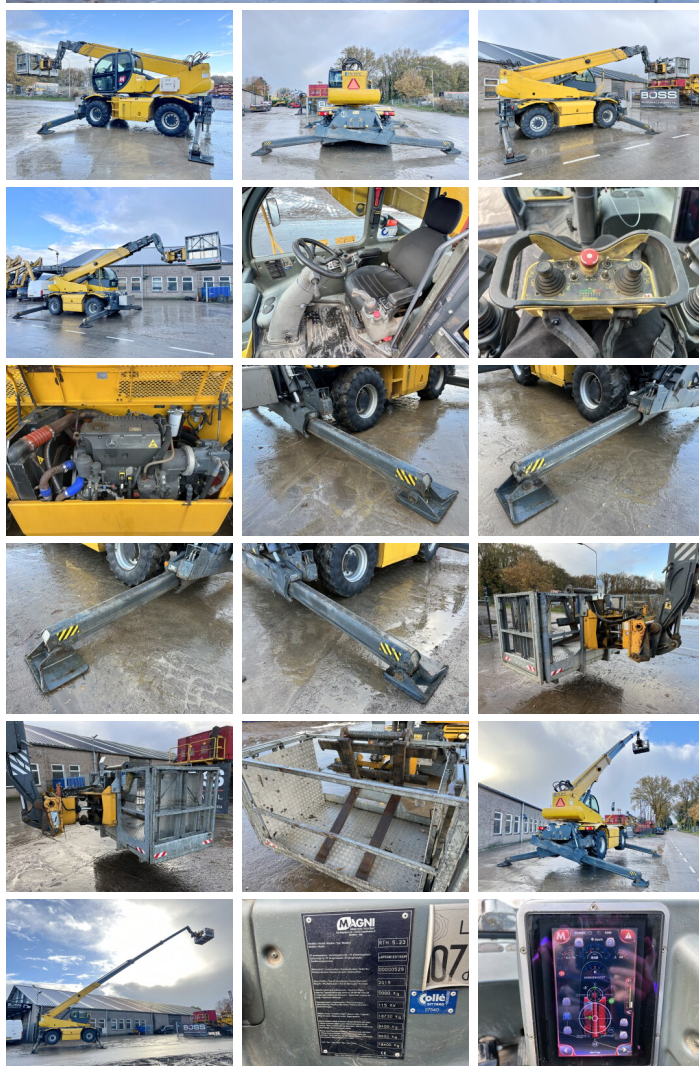
????
???? \????
????\????
????
???? (?? ????)
?????? ???? ??

Mercedes Benz
OM924LA
4
115

Banden / Rupsen

30% 30%

445/65R22.5



30% 30%

445/65R22.5