

Hitachi

# Hitachi KH150 GLS-2 - 30.3m Drill

€ 125.000???

1977  
BM006411  
5.453

## Algemeen

KH150 GLS-2 - 30.3m Drill  
Veldhoven, Netherlands

Dutch vehicle  
Certificaat

CE  
Available at Boss Machinery! This Hitachi KH150 GLS-2 - 30.3m Drill from 1977 has an engine power of - kW and counts 5453 operational hours. Always worked in The Netherlands. The total weight of this Hitachi KH150 GLS-2 - 30.3m Drill is - kg and the dimensions are 9.50 x 3.42 x 3.47. Furthermore, this KH150 GLS-2 - 30.3m Drill is equipped with ??????. The Hitachi Drill also has a CE marking. Do you want more information or do you want to try the Hitachi KH150 GLS-2 - 30.3m Drill at our yard? Please let us know.

## Maten / Gewichten

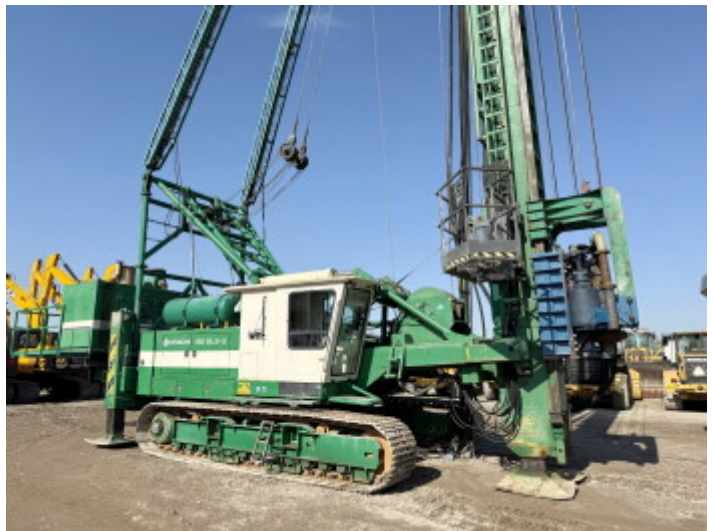
9.50 x 3.42 x 3.47

## Motor informatie

Cummins NTA 855 (Powerpack)  
DAF 1160 (Machine)

## Banden / Rupsen

30  
80  
80  
77 cm



# Opties

---

?????? ??????